

New Home For Shabby2Chic



A social enterprise which recycles furniture, sometimes from landfill and tips, and trains various community groups to restore items ready for sale has moved into new premises.

Shabby2Chic now has its studios on Burton Road in Blackpool and the team, led by Sandra Johnson, is going from strength to strength with work being sold to individuals and through Ebay.

It is great news for people like Paul (seated here with Sandra) who has a brain injury and attends with his occupation therapist. He designed and painted the tiger table at the front.

The business benefited from a level one grant from Unltd – the Foundation for Social Entrepreneurs, which supported Sandra through the move.

She said: "The move to bigger premises has allowed me to bring in new artistic and creative people that will benefit the business. I'm grateful to all the organisations that have supported Shabby2Chic and I look forward to taking the business to the next level."

Issue 4
Spring 2011



Jordan Sparks Internet Revolution



More than 250 people can now get to grips with basic computer skills thanks to Jordan Thomas.

For the 20-year-old, whose role at Clarendon First Step Community Centre is funded by the Future Jobs initiative, has implemented, delivered and mentored an e-learning class to local people who have never been near a computer before.

Chief Officer at the centre, Joe Shepherd, said: "It is a course that we wouldn't have been able to run had it not been for Jordan. He has thrown himself into the role and helps with everything like serving lunches, running clubs and being part of the befriending scheme."

And Jordan thinks the Future Jobs Fund is just what he needed to help get a job. He said: "I enjoy doing different things all the time and helping people so it's really good at First Steps. I found out about it through the job centre and I've got so much out of the whole experience."

Find out how one social entrepreneur is helping people with Alzheimers. See page 4.



Alzheimer's Society Puts Down New Roots With The Help Of Urban Organic



Social Enterprise Urban Organic cic is set to launch a new teaching and sensory garden at Watson Road park in Blackpool after 12 months renovation work.

Working in collaboration with the Alzheimers Society the garden features ground level and raised beds, an orchard, gazebo, pond and covered seating area.

The project aims to provide a green, open space where people can take part in gardening activities, interact with nature or simply relax in beautiful surroundings.

Alan Hulme of Urban Organic, said: "This has been a very rewarding assignment and I look forward to seeing those affected by Alzheimers and their carers coming to the new facility this summer.

"The garden will also be used for teaching and pupils from local schools will be invited to learn more about nature and plants."

Over 60% Jump In Turnover For Social Enterprises In Blackpool

New figures reveal that social enterprises in Blackpool have seen their combined turnover increase by at least 60% over the last three years.

Social Enterprise Solutions initially undertook a benchmark exercise when it began its LEGL-funded project to establish and develop social enterprises back in 2008. Now the project has concluded, the turnover has been calculated again and shows a jump from £15.7 million to £25.3 million. The data also reveals that the sector employs around 660 people and engages with more than 1600 volunteers.

Clive Hirst, chairman at Social Enterprise Solutions CIC, said: "It is pleasing to see the social enterprise sector going from strength to strength. While we cannot attribute the big

increase solely down to our work, we have certainly played a key role and helped to turn the spotlight on the great work that is being done to benefit the community.

"Social enterprises range from large organisations like Trinity Hospice, the Grand Theatre and Great Places to small companies with just a few members of staff. However, social enterprises are adept at harnessing the services of volunteers with these figures showing a ratio around 3:1 against employees.

"It is important to remember that the LEGL project was just one aspect of the work undertaken at Social Enterprise Solutions and we look forward to replicating similar successes among the other programmes we deliver."



Breaking New Ground To Develop Social Enterprise Zones

Social Enterprise Solutions is pioneering a concept that could see Social Enterprise Zones being established across the country.

The idea would see social enterprises work together in local areas, share resources and potentially benefit from tax breaks and other ways to stimulate growth, along the lines of Fairtrade Towns.

A major piece of research is now underway by Hope University in Liverpool which will draw up recommendations on how zones should be implemented and how they should be constituted.

The study by Dr Bob Doherty, which has been funded by Social Enterprise Solutions, Nat West

and the Royal Society of Arts, will culminate in a workshop taking place in May in Garstang – the world's first Fairtrade Town – attended by key figures from social enterprise in the UK.

For more information on Social Enterprise Zones, contact the team at Social Enterprise Solutions on 01253 344123.



Social Enterprise Solutions (UK) CIC

Unit 2 Blackpool Enterprise Centre, Lytham Road, Blackpool FY4 1EW

T: 01253 344123 W: www.socialenterprisesolutions.co.uk



Hello, I'm Tony Carr...

A new era is dawning at Social Enterprise Solutions as our highly successful project to establish and develop social enterprises in Blackpool, which was funded by the Local Enterprise Growth Initiative, draws to a close.

I would like to thank everybody who assisted in the delivery of the project and I am delighted the town now has a flourishing social enterprise sector.

It means that as a company – we were Blackpool's first Community Interest Company and the first on the Fylde coast to gain the coveted Social Enterprise Mark – we can now concentrate on the other elements of our business and develop them further. And the timing couldn't be better with social enterprise high on the political agenda.

With our partners we have helped to develop a number of social enterprises through the Future Jobs Fund. Meanwhile in Knowsley we have a specific project to develop the sector in partnership with the local authority. Much of our work at the start of 2011 has been assisting public sector staff who face redundancy and want to take up the challenge of running their own social enterprise.

There are a host of new opportunities with the government's Work Programme and DWP's Mandatory Work Activity scheme and we are actively involved in helping to formulate how a Social Impact Bond programme could be delivered across the North of England. So too we anticipate working more closely in the future with our partners Social Enterprise North West and Social Enterprise Lancashire, Selnet.

Our focus throughout has been, and always will be, to support and encourage the great work that social enterprises deliver to their community.

New Services From Social Enterprise Solutions

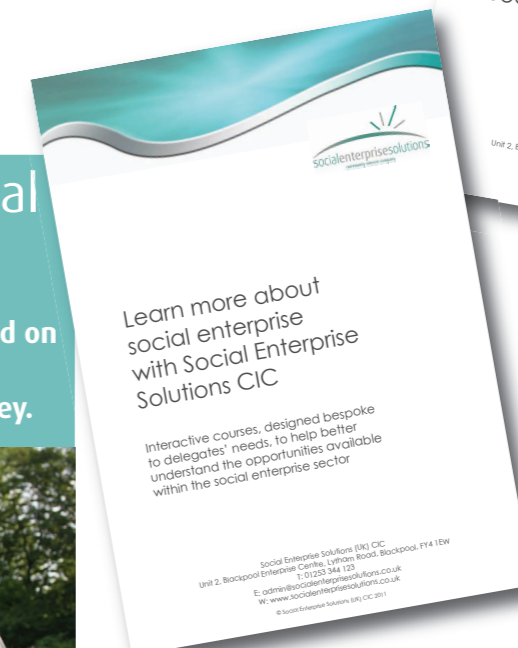
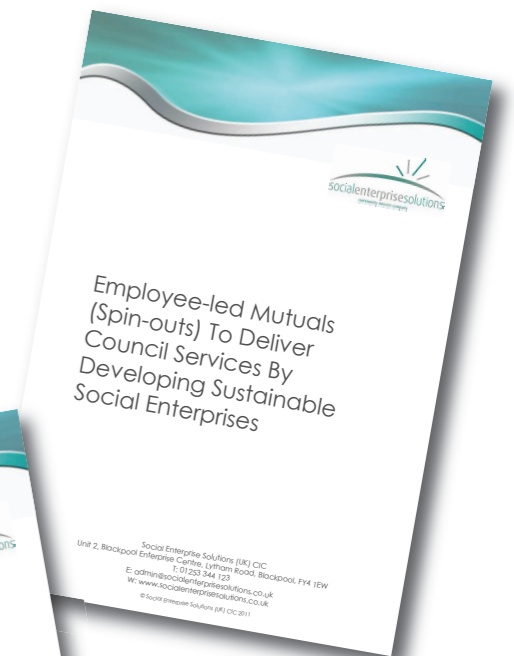
Social Enterprise Solutions has launched two new prospectuses in response to the growing demand for information about social enterprise.

A host of new training courses have been written and are being delivered by the team in aspects such as Business Planning, Introduction To Social Enterprise For The Public Sector and 10 Steps To Creating A Social Enterprise.

Meanwhile, SES has formalised its offer to public bodies to undertake the whole process of 'spinning out' a department so it becomes a standalone social enterprise.

Many public sector organisations are actively considering how to deliver existing services in new, innovative ways. There are demands to have a similar, or greater, level of service maintained from a lower cost base and not controlled directly by a centrally-funded body. And many are choosing the social enterprise route.

The team at Social Enterprise Solutions has a wealth of experience in externalising services and initially runs through the eight key criteria to determine if a department will be a successful social enterprise.



For more information on spin out services and training please contact the team on 01253 344123.

Thinking BIG How The Big Society Is Taking Shape



The Big Society is taking shape across the Fylde Coast. That was the message at a major conference arranged by Social Enterprise Solutions in partnership with The Blackpool Third Sector Strategic Partnership.

A range of guest speakers addressed the packed room at Blackpool town hall including Blackpool North MP Paul Maynard, hospital chief Aidan Kehoe and the YMCA's John Cronin.

Aidan Kehoe, Jayne Mottershead, Tony Carr, Paul Maynard MP, John Cronin and Clive Hirst



The MP's View

"To me, it is about identifying problems and solutions at a local level, and the state getting out of the way to allow social enterprises, Community Interest Companies and other third sector bodies to get on with the job. It may mean the state getting out of the way, or it may mean the state keeping out of the way, or it may even mean the state getting involved in an innovative way. But it is about local people defining the challenge and the solution – and the state acting as the enabler."

NHS Leads By Example

Bispham Nurse Led Therapy Unit was incorporated as Spiral Health Community Interest Company and is one of the first healthcare social enterprise of its type in the country.

The unit has been declared a "2nd Wave Pathfinder site" by Francis Maude, the cabinet office minister for the Civil Society.

He said: "This is a Big Society approach, decentralising power so people can deal with the issues that concern them. We must not be afraid to do things differently if we are to provide better services for less money. The Pathfinders show that this vision is possible but it won't happen without real commitment and support."

Jayne Mottershead, who manages the unit, said: "All credit must be given to the commitment and tenacity of the staff and the management team in delivering this national first."

Aidan Kehoe, the Chief Executive of Blackpool Teaching Hospitals NHS Foundation Trust, backed the scheme saying: "The Trust believes in deep employee engagement and there is no better way of achieving this than through social enterprise."

Miliband briefed by Social Enterprise Solutions

Labour leader Ed Miliband has been briefed on the local social enterprise sector by Social Enterprise Solutions director, Dennis Langley.



He was part of a small delegation invited to meet with Mr Miliband as part of his visit to the North West during his leadership election campaign. The invitation came from Blackpool South MP, Gordon Marsden, who arranged the visit to meet with business people who work for the social good.

Ed Miliband, who clinched the Labour leadership with a 1.3% majority over his brother David, was a former Cabinet Office minister with responsibilities for social enterprise, when the party was in power.

Dennis said: "This was an excellent opportunity for us to represent the sector at the highest levels and give the leader of the Labour party a snapshot of how business is coping in the current climate."



Social Enterprise Solutions CIC in conjunction with Blackpool, Wyre & Fylde CVS is providing the opportunity for your organisation to get to know PQASSO with a series of introductory training courses. You'll learn how it is evidence based, how it will guide your organisation to a good standard of quality throughout and how it can help develop more useful procedures during the process.

The total fee is £20 per person, (minimum of 10 is required for each date)

For more details contact Jane Cooke at Social Enterprise Solutions on 01253 344123.